

ICOM DESIGN Talk
- Tuesday February 25, 2025

14:00 Paris, 8:00 New York, 22:00 Tokyo

Online Zoom Meeting (approx. 1 hour program)

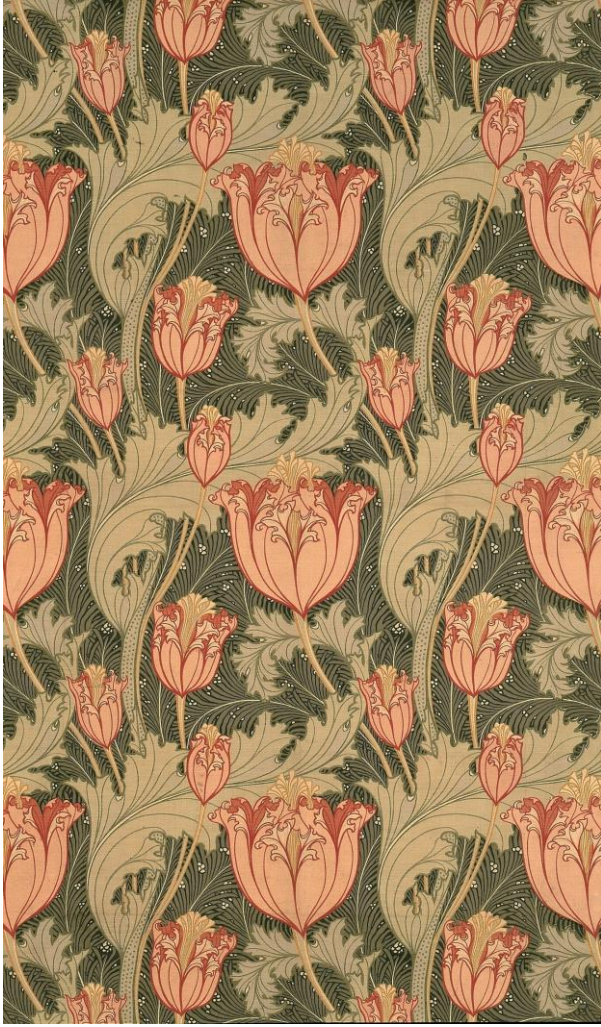
Dr. Anika Reineke on the exhibition
Reform of Life & Henry van de Velde in the Middle

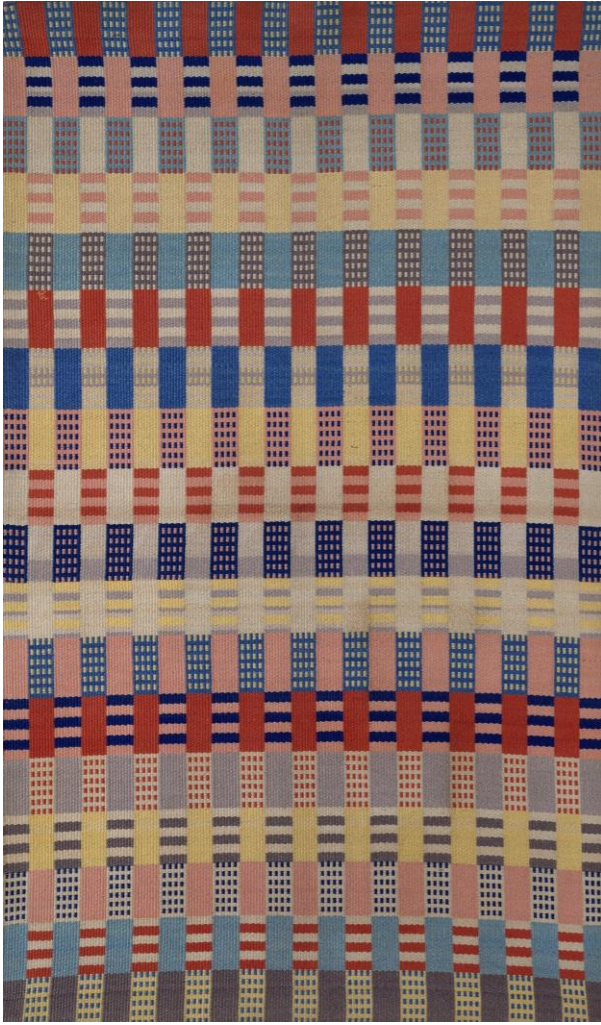
Dr. Anika Reineke - Curator of the textile and applied arts collection,
Henry van de Velde Museum of the Kunstsammlungen Chemnitz



The Belgian artist Henry van de Velde (1863–1957) is regarded as the most important exponent of Art Nouveau. Less well known is his role as a key figure in the European reform art movements of the late nineteenth and early twentieth centuries. At the height of his career, he designed two villas, a tennis club and several interiors in Chemnitz, Germany, including Villa Esche in 1902–03 as an architectural and artistic Gesamtkunstwerk. Today it houses the Henry van de Velde Museum of the Kunstsammlungen Chemnitz. With over 130 works and sixty-five historical photographs from the circle of his patron and friend Herbert Eugen Esche, the Kunstsammlungen Chemnitz own an important part of van de Velde's oeuvre. At the same time, the Textile and Decorative Arts Collection of the Kunstsammlungen Chemnitz has been acquiring contemporary European applied arts and textiles since its foundation in 1898, and thus has outstanding holdings of works from the Arts and Crafts movement, Art Nouveau and the Bauhaus, among others.

Through the lens of Henry van de Velde's role as an artist, architect, teacher and writer, the exhibition presents the close network of artistic visionaries, producers and dealers between 1880 and 1930, including William Morris, Richard Riemerschmid, Marianne Brandt, Otti Berger and Max Bill. These »apostles of the new style« spread throughout Europe their belief in the »return of beauty upon Earth and the advent of an era of social justice and human dignity« (Henry van de Velde). In two venues, the Kunstsammlungen am Theaterplatz and the Henry van de Velde Museum in Villa Esche, the exhibition traces the lifelines of the reform art movements between idealism and pragmatism, artistic success and ideological failure. The presentation at the Henry van de Velde Museum will be on show throughout the entire European Capital of Culture year in 2025.





[Register here!](#)

You will be sent a link shortly before the program.

This ICDAD organised talk is the seventh in a series of online conversations with decorative arts and design professionals.



You are receiving this email because you are listed as individual member or as representative of an institutional member of ICOM-ICDAD, or because you were interested in receiving information from us.

You can change your affiliation towards ICDAD via <https://icom-museum.force.com/login>.

Our mailing address is:

ICOM-ICDAD

Design Museum Gent

Botermarkt 1

9000 Gent

Belgium

Want to change how you receive these emails or unsubscribe?

Get in touch with secretary.icdad@icom.museum.